

S-LINE

STYLEGUIDE



BAVARIA S-LINE STYLEGUIDE

1	Exterior colour concept	3
2	Deck Flooring	4
3	Exterior	5
4	Interior Styling	8
5	Interior Upholstery / Mattress	10
6	Hoods and Covers	12
7	Further Information	13

1 Exterior colour concept



Example: Hull white, radar arch white and stripe black



Example: Hull white, radar arch dark grey and stripe Silk grey



Example: Hull Silk grey, radar arch dark grey and stripe silk grey

Hull

Radar Arch /
B-Pillar

Hull stripe

White Gelcoat

White Gelcoat

Black Gelcoat

Silk Grey Gelcoat

Silk Grey Gelcoat

Silk Grey Gelcoat

Dark Grey
Gelcoat

Dark Grey
Gelcoat

Standard

Options

2 Deck Flooring

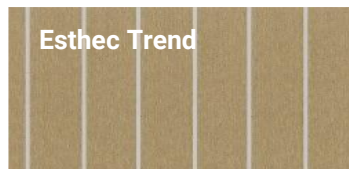
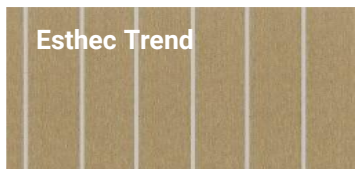
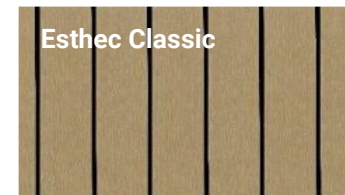
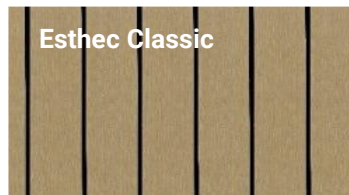
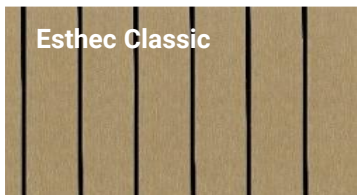
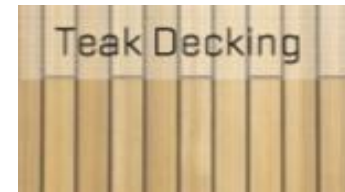
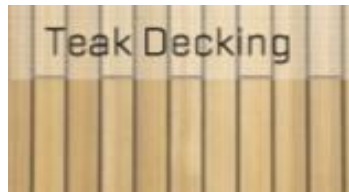
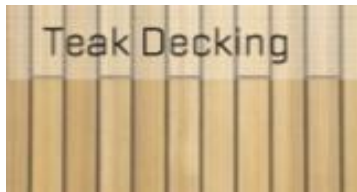
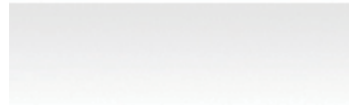
Bathing platform

Cockpit floor

Side deck

NON- SLIP
GELOCOAT WHITE

NON- SLIP
GELOCOAT WHITE

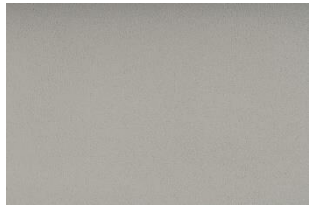


Notes on our Teak Decking:

- Bavaria Yachts started to convert all teak decks with wood from Myanmar to plantation teak in July 2021.
- Since September 2021, all teak decks at Bavaria Yachts have been made exclusively from FSC®-certified plantation teak.
- The plantation teak used does not come from Myanmar or Asia.
- The origin is Central America. Only wood from legal sources can receive/have an FSC® certificate.
- The plantation teak supplied is selected and is comparable in quality to Myanmar teak.

3.1 Exterior – Cockpit Upholstery

Standard



STONE



SAND

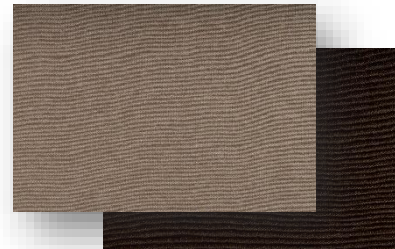
Maglia



Maglia Granite

Options

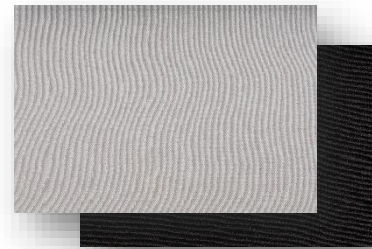
Suntex



SUNTEX
Sandstone/ Mocca



SUNTEX
Champagne/ Beige



SUNTEX
Ice/ Carbon

Suntex with Diamond Stitching



SUNTEX
Sandstone/ Mocca



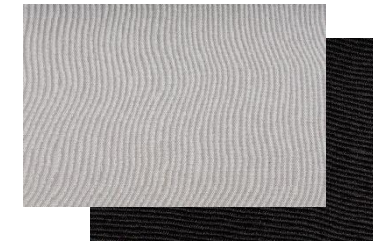
Option
"Diamond Stitching"



SUNTEX
Champagne/ Beige



Option
"Diamond Stitching"



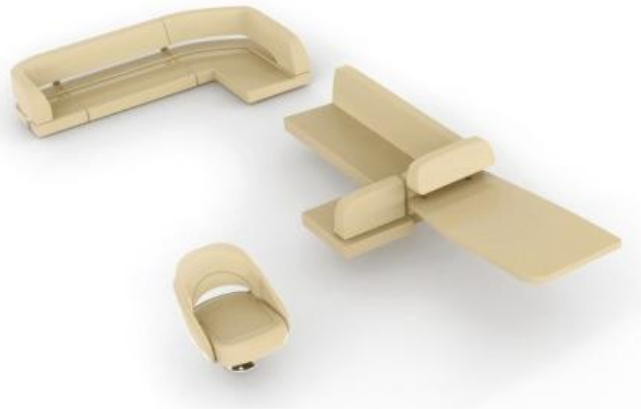
SUNTEX
Ice/ Carbon



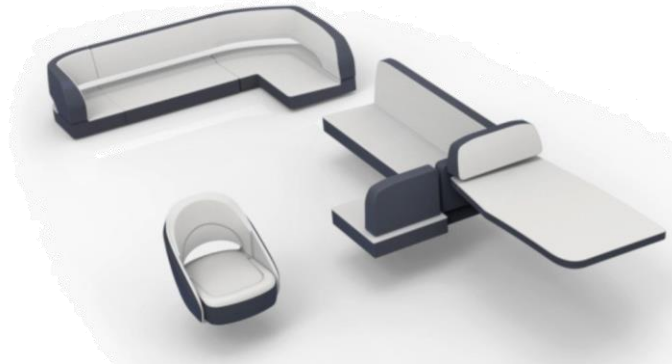
Option
"Diamond Stitching"

3.2 Exterior - Cockpit Upholstery

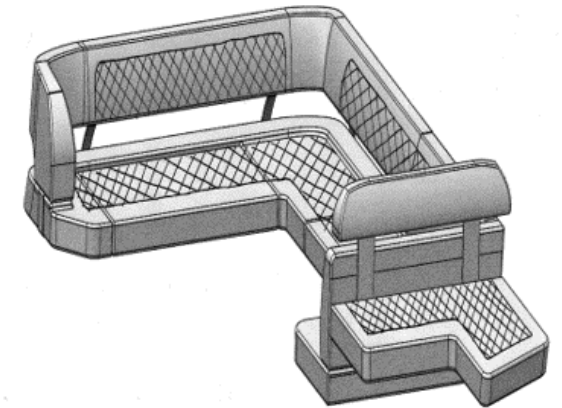
Standard Vinyl



Suntex



Suntex with Diamond Stitching



Example – please check pricelist for other models

3.3 Exterior – Cockpit table and wetbar surfaces



Artificial wood in teak-optic

Surfaces of the exterior table variants and the wetbar are provided with artificial wood.



Example images of the S45 – valid for all boats of the S-LINE

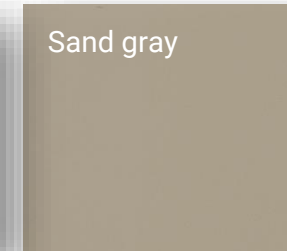
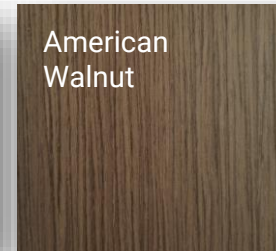
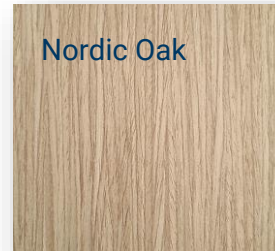
4.1 Interior Styling – Wood



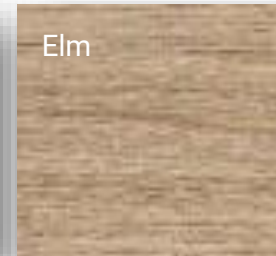
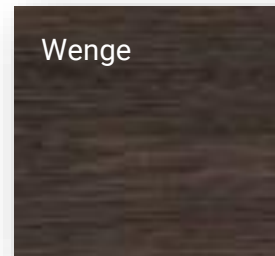
Interior Wood



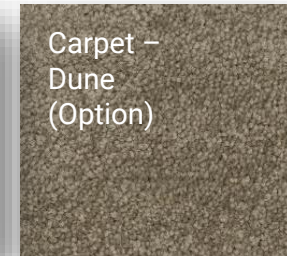
Overhead locker doors



Floor



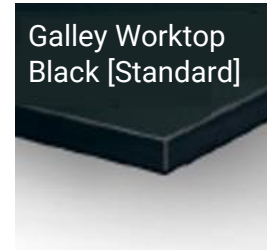
Carpet



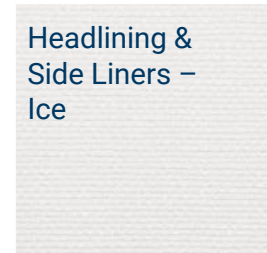
4.2 Interior Styling – Materials & Fabrics



Galley Worktop



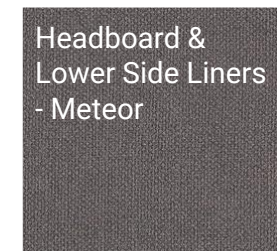
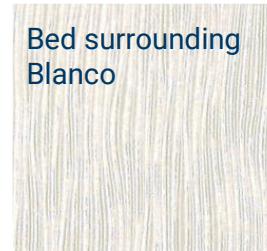
Liners



Venetian Blinds



Cabins



5.1 Interior upholstery



Standard

Comfort Fabric



Cedar



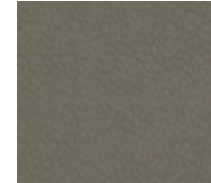
Creme



Pebble

Options

Opus Leatherette



Oyster

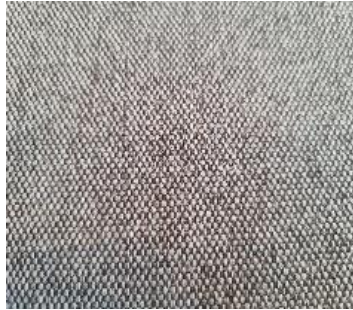
Savoy Leather



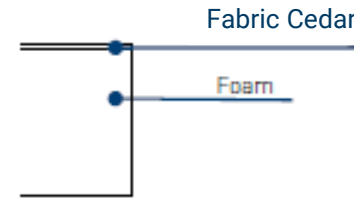
Ivory

5.2 Mattresses

STANDARD MATTRESS

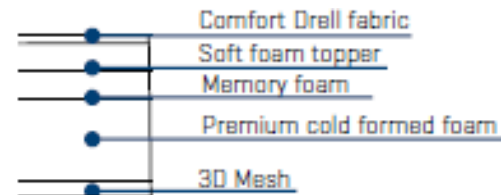


Cedar



Height: 10cm

LUXURY COLD FOAM MATTRESS



Height: 14-16cm

6 Hood and Cover

Bimini



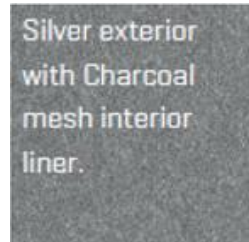
Camper Cover



Mooring cover



Fabric HT Softtop



7 Further Information

Pricelist

Actual overview of standard, options and packages incl. restrictions.

[Link](#)

MyBavaria

Actual pictures, videos, brochures and views of each model.

[Link](#)

3D Virtuell Walkaround

360 degree walkaround for each model.

[Link](#)

Sales Manuals

Detailed discription of all concepts of the models.

[Link](#)

Bavaria Upholstery Sample Book

Samplpes for all upholstery materials

Disclaimer

This Styleguide is intended for advertisement only and is not part of a contract, warranty or of any offer. We reserve the right to modify or improve our products and to change specifications without notice.

We are not liable for errors and printing mistakes.

Version: 1/2024

Valid from 09.09.2023

Any previous BAVARIA YACHTS Styleguide is no longer valid.